



Weintraut

28677



Weintraub

28677



MODEL L1696	KEYBOARD
77 KEY ASR-37 EXPANDED	
58 KEY ASR-37 EXPANDED	



- Single +5 vdc input with TTL compatible outputs
- Gold flash for PCB connector
- N-key rollover
- Five mode ASCII encoded
- Time delay automatic repeat of all keys
- Two-shot molded gray keytops
- Sloped profile
- Off-the-shelf availability

- PROM modification of the output codes

The 77 key Model L1696 provides the ASR 37 Teletype® format with all 128 ASCII characters plus a high speed numeric entry pad, five cursor control keys and four spare key positions for your custom use. This off-the-shelf design includes all of the standard features as well as the additional flexibility of inexpensively incorporating the optional features listed on this data sheet.

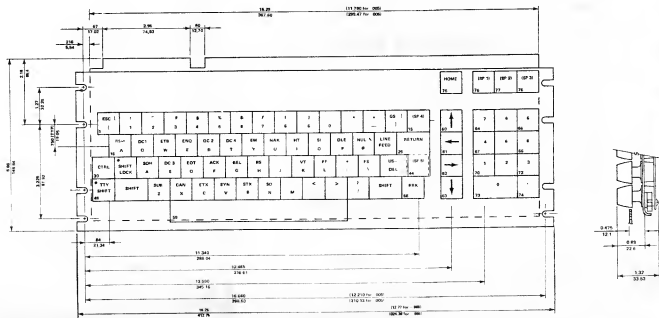
The keyswitches offer the standard travel and force of the popular electric typewriter. Capacitive switches assure 100 million minimum key-

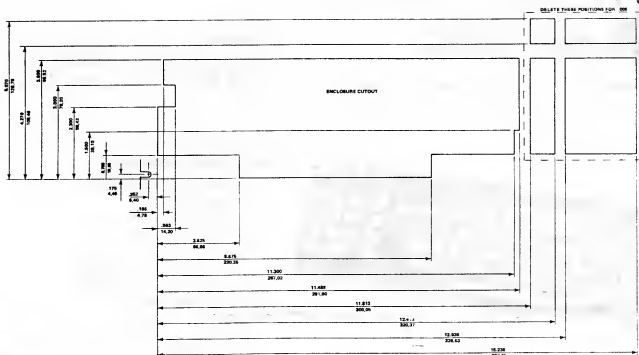
stroke reliability. N-key rollover allows high speed operation.

Key Tronic Sales Representatives are located worldwide to assist you with your unique keyboard requirements. They have pricing, delivery and part number information on all of our standard designs, and can also work with you to specify a low cost custom keyboard to fit your special requirements.

APPLICATIONS:

The Model L1696 can be used anywhere the ASR 37 format is required.



**CODE CHART**

TTY										TTY										TTY												
Key	Un	Shft	Shft	Shft	Shft	Shft	Shft	Ctrl	Shft	Key	Un	Shft	Shft	Shft	Shft	Shft	Shft	Ctrl	Shft	Key	Un	Shft	Shft	Shft	Shft	Shft	Shft	Ctrl	Shft			
1	(ESC	ESC	40	I	L	L	L	L	FF		FF		41	~							FF				
2	1							1	1	42	~									42	~											
3	2							2	2	43	DEL					FS		FS		43	DEL											
4	3							3	3	44	SPARE KEY #5 (Opt. N on Std.)									44	SPARE KEY #5 (Opt. N on Std.)											
5	4							4	4	45	TTY LOCK - INTERNAL FUNC									45	TTY LOCK - INTERNAL FUNC											
6	5							5	5	46	4 SHIFT - INTERNAL FUNCTION									46	4 SHIFT - INTERNAL FUNCTION											
7	6							6	6	47	X	C	X	C	X	CAN		CAN		47	X	C	X	C	X	CAN		CAN				
8	7							7	7	48	X	C	X	C	X	ETX		ETX		48	X	C	X	C	X	ETX		ETX				
9	8							8	8	49	X	V	X	V	X	STX		STX		49	X	V	X	V	X	STX		STX				
10	9							9	9	50	n	N	N	N	N	SO		SO		50	n	N	N	N	N	SO		SO				
11	0							0	0	51	m	M	M	M	M	CR		CR		51	m	M	M	M	M	CR		CR				
12	-							-	-	52	<					<		<		52	<					<		<				
13	+							+	+	53	>					>		>		53	>					>		>				
14	3						GS	GS	GS	54	/					/		/		54	/					/		/				
15	SPARE KEY #4 (DISCRETE)										55	5 SHIFT - INTERNAL FUNCTION										55	5 SHIFT - INTERNAL FUNCTION									
16	△						RS	RS	RS	56	SPARE KEY #6 (DISCRETE)									56	SPARE KEY #6 (DISCRETE)											
17	△						OC1	OC1	OC1	57	SP	SP	SP	SP	SP	SP		SP		57	SP	SP	SP	SP	SP	SP		SP				
18	△						END	END	END	58	SI	SI	SI	SI	SI	SI		SI		58	SI	SI	SI	SI	SI	SI		SI				
19	E						END	END	END	59	BS	BS	BS	BS	BS	BS		BS		59	BS	BS	BS	BS	BS	BS		BS				
20	R						OC2	OC2	OC2	60	SO	SO	SO	SO	SO	SO		SO		60	SO	SO	SO	SO	SO	SO		SO				
21	T						OC4	OC4	OC4	61	LF	LF	LF	LF	LF	LF		LF		61	LF	LF	LF	LF	LF	LF		LF				
22	Y						EM	EM	EM	62	8					8		8		62	8							8				
23	U						NAK	NAK	NAK	63	9					9		9		63	9							9				
24	I						HT	HT	HT	64	4					4		4		64	4							4				
25	O						SI	SI	SI	65	5					5		5		65	5							5				
26	P						DLE	DLE	DLE	66	6					6		6		66	6							6				
27	⊗						NUL	NUL	NUL	67	7					7		7		67	7							7				
28	LF	LF	LF	LF	LF	LF	LF	LF	LF	68	8					8		8		68	8							8				
29	CR	CR	CR	CR	CR	CR	CR	CR	CR	69	5					5		5		69	5							5				
30	CONTROL INTERNAL FUNC										70	1					1		1		70	1							1			
31	SHIFT LOCK - INTERNAL FUNC										71	2					2		2		71	2							2			
32	A						SON	SON	SON	72	3					3		3		72	3							3				
33	S						OC3	OC3	OC3	73	0					0		0		73	0							0				
34	D						EOT	EOT	EOT	74	0					0		0		74	0							0				
35	I						ACK	ACK	ACK	75	VT	VT	VT	VT	VT	VT		VT		75	VT	VT	VT	VT	VT	VT		VT				
36	G						BEL	BEL	BEL	76	SPARE KEY #1 (DISCRETE)									76	SPARE KEY #1 (DISCRETE)											
37	H						BS	BS	BS	77	SPARE KEY #2 (DISCRETE)									77	SPARE KEY #2 (DISCRETE)											
38	J						LF	LF	LF	78	SPARE KEY #3 (DISCRETE)									78	SPARE KEY #3 (DISCRETE)											
39	K						VT	VT	VT	79	SPARE KEY #4 (DISCRETE)									79	SPARE KEY #4 (DISCRETE)											

ELECTRICAL DATA

Input power	+ 5 vdc
Rollover	N key
Data output	7 bit parallel ASCII (+ or - logic)
Stroke	Pulsed (+ or - logic)

MECHANICAL DATA

Total key travel 0.171 in (0.434 cm)
nominal
Key force 2.5 oz. (70.88 gr)
nominal
Keytop color . . . Dark gray (Cyclolac 3500)
with black (Cyclolac 4500) Control keys
Keyswitch reliability . . . > 100 million MCBF

CONNECTOR DETAIL

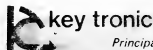
PIN	FUNCTION	PIN	FUNCTION
1	<u>BIT 1</u>	A	BIT 1
2	<u>BIT 2</u>	B	BIT 2
3	<u>BIT 3</u>	C	BIT 3
4	<u>BIT 4</u>	D	BIT 4
5	<u>BIT 5</u>	E	BIT 5
6	<u>BIT 6</u>	F	BIT 6
7	<u>BIT 7</u>	H	BIT 7
8	<u>BIT 8*</u>	J	BIT 8*
9	+5 vdc	K	+5 vdc
11	Ground	N	Ground
12	Strobe	M	<u>Strobe</u>
13	SP1	P	SP1
14	SP2	R	SP2
15	SP3	S	SP3
16	SP4	T	SP4
17	SP5 (option)	U	SP5 (option)
18	SP6	V	SP6

Recommended Connector

Cinch P.N. 251-18-30-160 or equivalent.

ORDERING INFORMATION:

When ordering, refer to Key Tronic part number 65-01696-01 for 77 keys, and 65-01696-05 for 58 keys. For pricing and availability, consult our nearest representative located in principal cities, worldwide.



Principal Cities Worldwide

P.O. BOX 14687 SPOKANE, WA 99214 USA
TELEPHONE 509-928-8000 TWX 510 773-1885

- Bit 8 is nonfunctional unless a PROM is installed.